

KANEKA ROOF-INTEGRATED PHOTOVOLTAIC PANELS

Minimalistic Appearance, Excellent Performance



Blended Aesthetics

Panel design blends seamlessly with your current roof tiles



Easy Installation

Even easier than standard solar panel installation



Durable & Reliable

Glass lamination with improved moisture barrier properties



Light Weight

Minimizes weight added to your roof



Fire Retardant

Metal sheet applied under the PV panel to decrease fire risk



Fire Safety

Module-level rapid shutdown harmonizing NEC2017 in case of fire



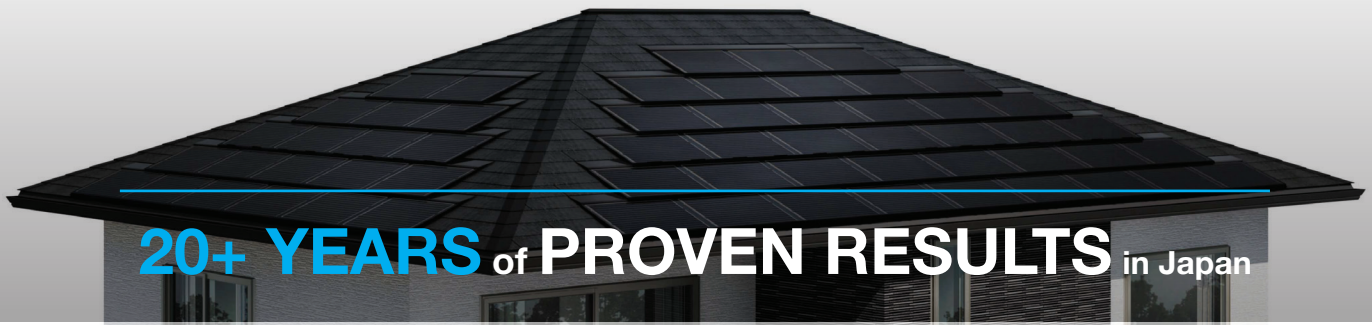
Water Resistant

More durable and waterproof than traditional roof tiles

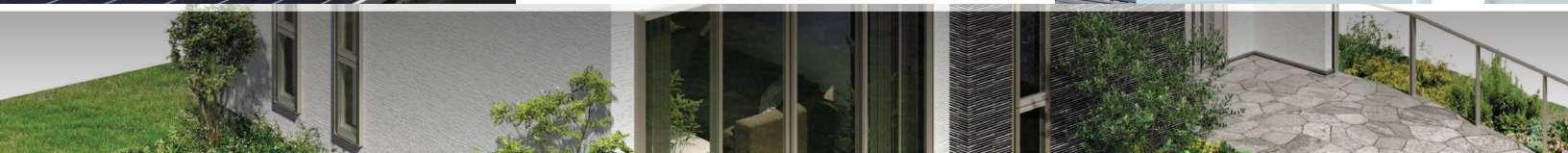
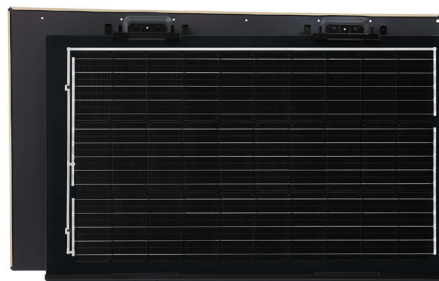


Easily Replaced

Can be easily partially replaced as needed



20+ YEARS of **PROVEN RESULTS** in Japan



ELECTRICAL CHARACTERISTICS (Standard Testing Conditions: 25°C, 1000W/m², AM1.5)

	P _{mpp} [W] (+3%/0%)	V _{oc} [V] (±10%)	I _{sc} [A] (±10%)	V _{mpp} [V] (Indicative value)	I _{mpp} [A] (Indicative value)	Efficiency (Indicative value)
R-LVA760	76	18.2	5.4	14.8	5.13	15.3%
R-LVA780	78	18.3	5.5	14.9	5.25	15.7%
R-LVA800	80	18.3	5.5	14.9	5.36	16.1%

Maximum system voltage 1000V

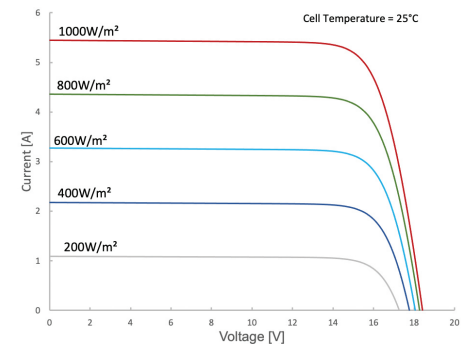
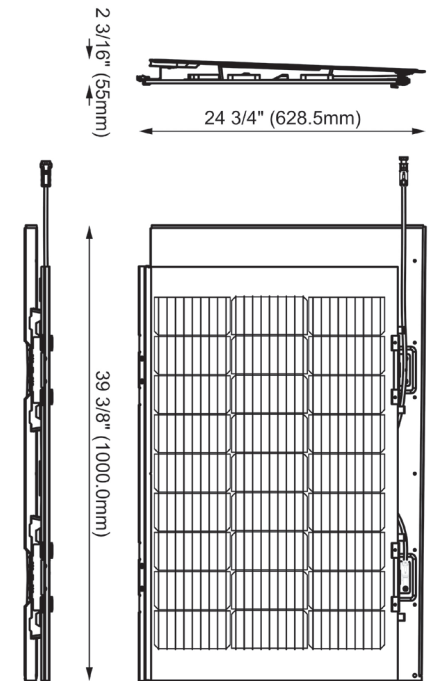
Fuse rating	15A
Coeff. of Voltage per °C	-0.36%/°C
Coeff. of Current per °C	0.068%/°C
Coeff. of Power per °C	-0.38%/°C

MECHANICAL CHARACTERISTICS

Cell type	Mono-crystalline PERC
Cell layout	27 half-cells (3x9)
Structure	Double Glass
Glass thickness	2mm x 2mm
Design load	+3600Pa/-1600Pa
Fire rating	UL790 Class A (Pending)
Cable	12 AWG; L1 33.5"; L2 49.2" (Ø 4mm; L1 0.85m L2 1.25m)
Connector type	MC4
Support structure	Steel
Number of diodes	2

PACKAGING INFORMATION

Module dimensions	39 3/8" x 24 3/4" x 2 3/16" (1000mm x 628.5mm x 55mm)
Visible dimensions	24 13/16" x 21 1/2" (910mm x 546mm)
Module weight	18.5lbs (8.4kg)
Modules/Box	2
Boxes/Pallet	14
Box dimensions	40 3/8" x 26 15/16" x 4 9/16" (1025mm x 684mm x 116mm)
Pallet dimensions	55 3/16" x 42 3/4" x 44 1/8" (1402mm x 1086mm x 1120mm)
Pallet weight	600lbs (272 kg)



Certifications (Pending)

UL61730
UL61215
UL7103
UL790 Class A

Warranty

25 year Linear Power Warranty
(subject to its terms and conditions)

The values herein are not guaranteed values and indicative values only. Actual values may vary according to testing protocols. The specifications and any other information on this page may be changed at any time without notice based on improvements or any other reasons.



Kaneka Corporation
1-12-32 Akasaka Minato-ku • Tokyo 107-6028 Japan
www.kaneka.com

Kaneka Americas Holding, Inc
6161 Underwood Road • Pasadena, Texas 77507 US
www.kanekaenergysolutions.com